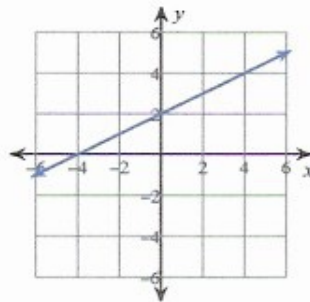


Answers to #6.2b

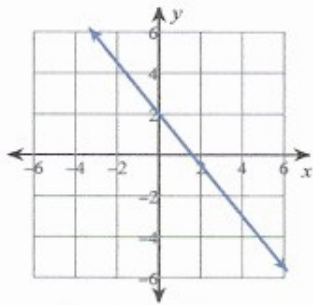
1) {3}

2) {12}

3)



4)



5) $x \leq 8$:

6) $x < 9$:

7) $y + 5 = -\frac{7}{2}(x - 5)$ or $y - 2 = -\frac{7}{2}(x - 3)$

8) $y = \frac{3}{5}x - 2$

9) (2, -4)

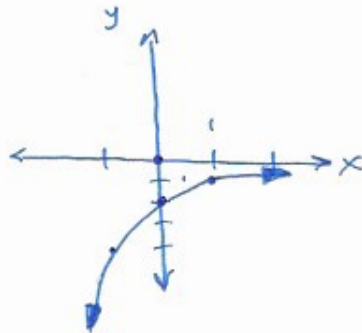
10) (-3, -3)

⑪ linear ⑫ exponential decay ⑬ exponential growth

⑭ $\frac{1}{8}$

⑮

x	y
-1	-4
0	-2
1	-1
2	-1/4



⑯ $a = 50, r = 25\%, y = 152.6$

⑰ $f(t) = 100,000 (1.15)^t$

⑱ $f(t) = 41,000 (1.07)^t$

⑲ $a = 360, r = 90\%, y = .4$

⑳ $p(t) = 1200 (.94)^t$