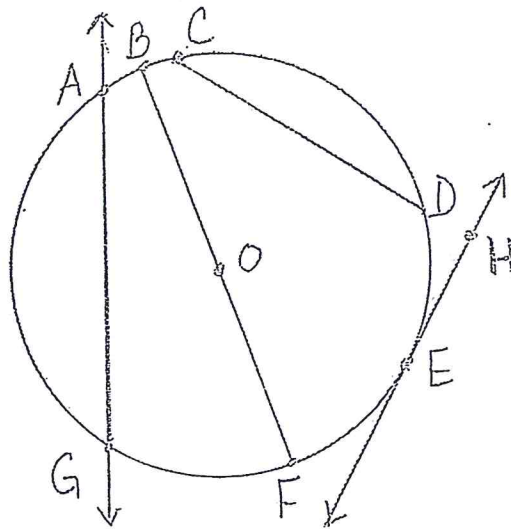
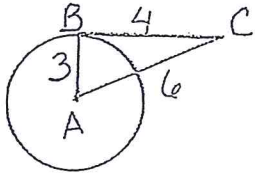


1. Using the diagram at the right identify the following:

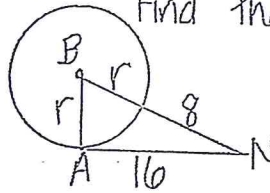
- a) two radii _____
- b) two chords _____
- c) a diameter _____
- d) a tangent _____
- e) a secant _____



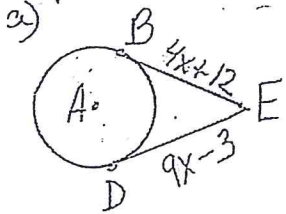
2. Tell whether \overline{BC} is tangent to $\odot A$. Justify your answer with a written explanation.



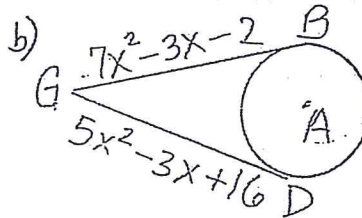
3. A is a point of tangency. Find the radius of $\odot B$.



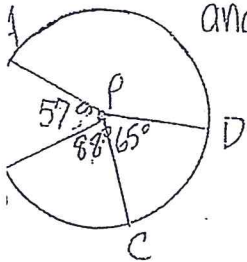
4. B and D are points of tangency



in $\odot A$. Find the value(s) of x.

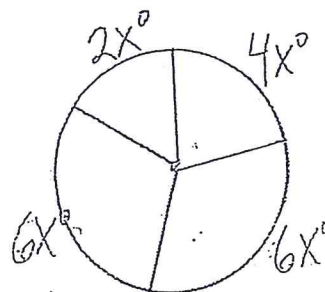


5. Find the measures of the arcs and identify as minor or major



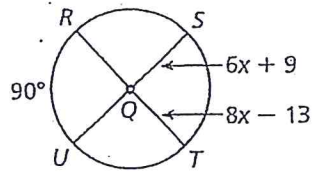
- a) \widehat{AB} _____
- b) \widehat{AC} _____
- c) \widehat{AD} _____
- d) \widehat{ACD} _____

6. Find the value of x.



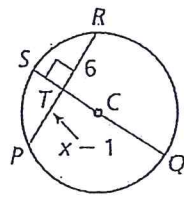
6. Find the value of x in $\odot Q$ and $\odot C$.

a)



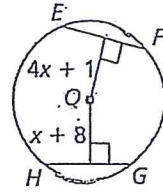
$x =$

b)



$x =$

c) $EF = 15$ $HG = 15$



$x =$