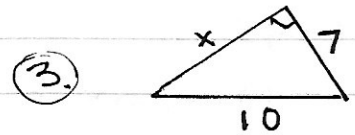
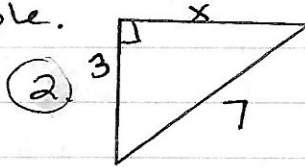
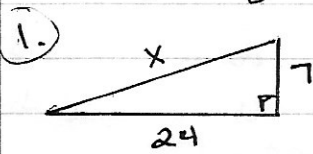


Math 2: Chapter 9 Review for test (HW for 3/25)

9.1 • Find the value of  $x$ . Give answer in simplest radical form if necessary. Then tell whether the side lengths form a Pythagorean triple.



④ A helicopter rose vertically 125 meters then flew 200 meters west. How far is the helicopter from its starting point?

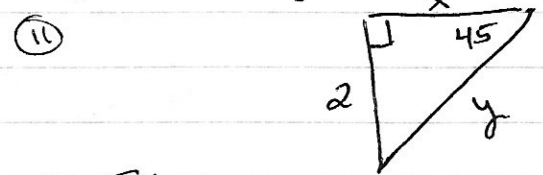
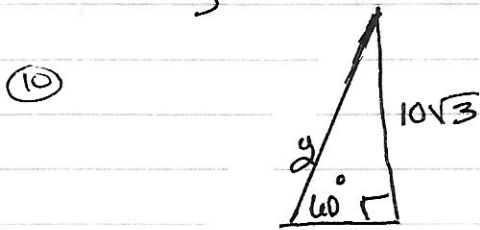
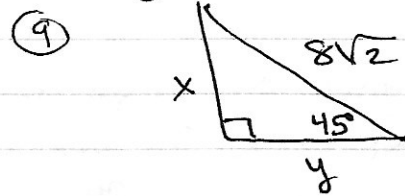
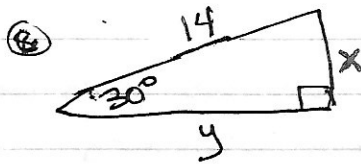
• Do the following segment lengths form a triangle? If so, is the triangle acute, right or obtuse?

⑤ 4, 10, 12

⑥ 5, 6, 7

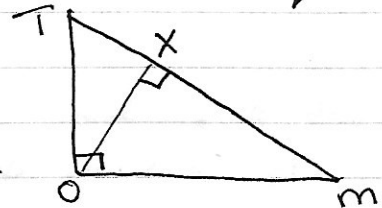
⑦ 2, 5, 7

9.2 • Find the values of  $x$  and  $y$ . Write your answers in simplest form.

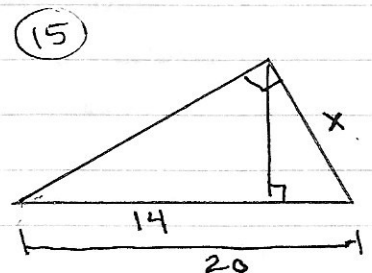
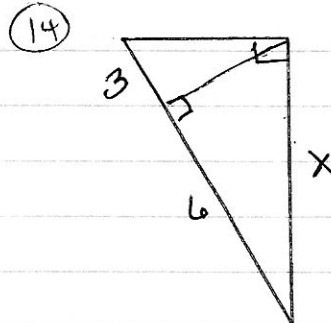
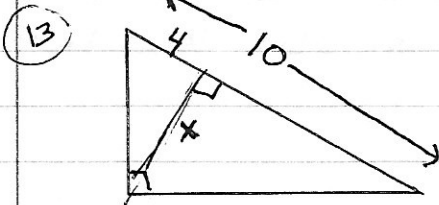


9.3 ⑫ Identify the similar triangles:

$\triangle Tom \sim \triangle \underline{\hspace{1cm}} \sim \triangle \underline{\hspace{1cm}}$



• Find the value of  $x$ .

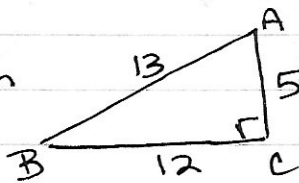


16. a) Find the geometric mean of 2 and 8

b) Find the geometric mean of 3 and 21.

9.4/9.5

17. Given



Find the trig ratio as a fraction and as a decimal rounded to the nearest hundredth

a)  $\tan A =$

b)  $\tan B =$

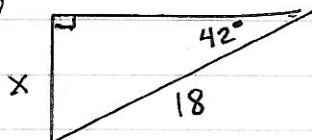
c)  $\sin B =$

d)  $\cos B =$

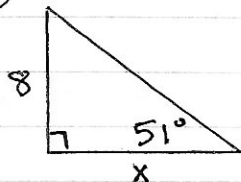
e)  $\sin A =$

• Find the value of  $x$ . Round your answer to the nearest tenth.

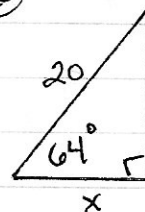
18



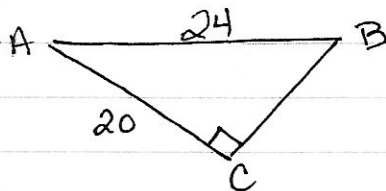
19



20



(9.6) 21 Solve the right triangle. Give exact answers when possible and round to one decimal place when necessary.



22 A 20 foot ladder leans against a wall. It reaches 18 feet up the wall. What is the angle of elevation? (nearest tenth)

23 You stand 100 ft. from the base of a tree and the angle of elevation to the top is  $35^\circ$ . How tall is the tree?