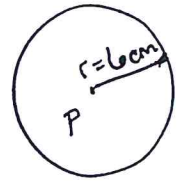


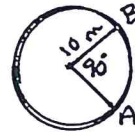
Math 2: Review for Chapter 11 Test

Name _____

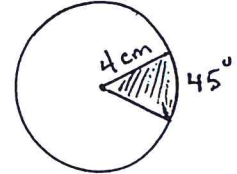
1. Find the circumference and area of circle P. Leave answers in terms of π .



2. Find the length of \widehat{AB} . Give exact answer and estimate.



3. Find the area of the shaded sector. Give exact answer and estimate.

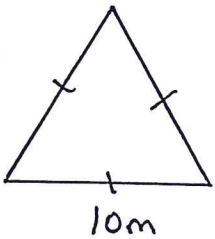


4. If a circle has $C = 20\pi$ cm, the diameter = _____ and the radius = _____.

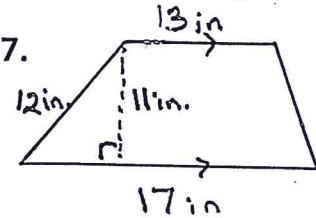
5. If a circle has $A = 49\pi$ cm², the radius = _____ and the diameter = _____.

Find the area of each figure. Be sure to give the units for your answers.

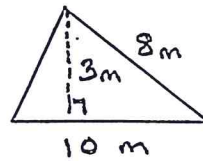
6.



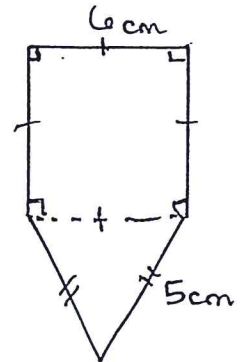
7.



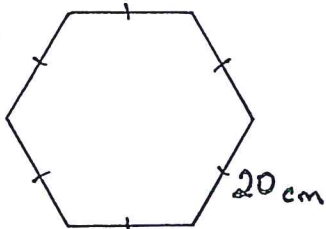
8.



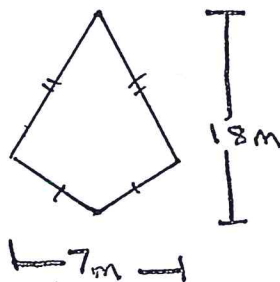
9.



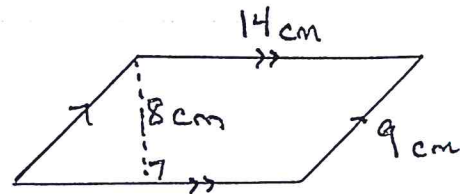
10.



11.

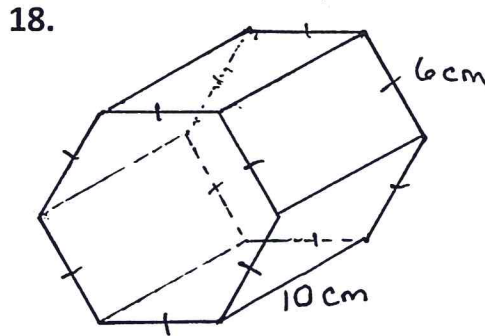
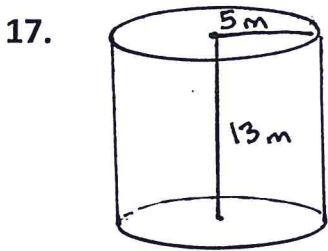
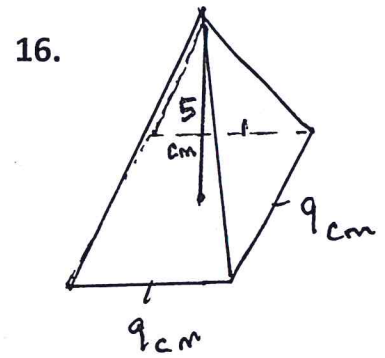
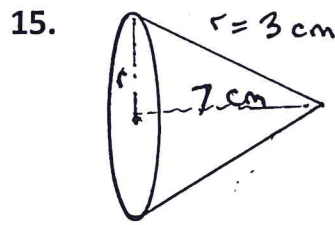
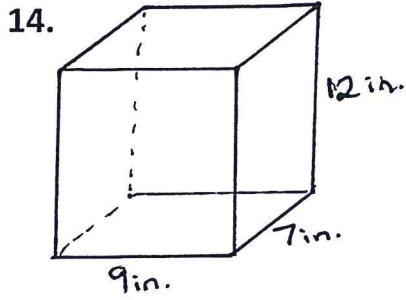


12.

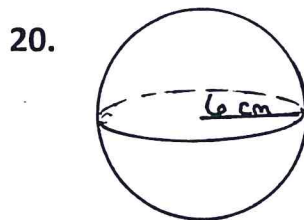
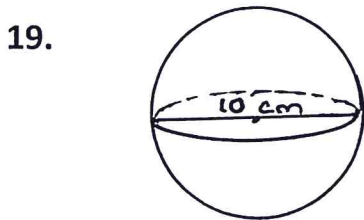


13. Two similar cylinders have radius lengths of 5 cm and 8 cm. What is the ratio of their volumes?

Find the volume of each solid. Be sure to give the units for your answers.



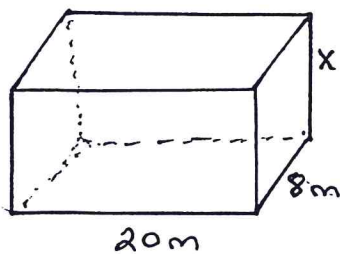
Find the surface area and volume of the spheres.



SA = _____ V = _____

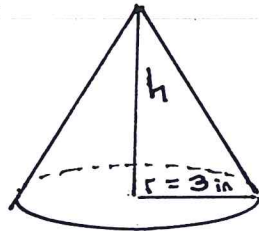
SA = _____ V = _____

21. Find the value of x .



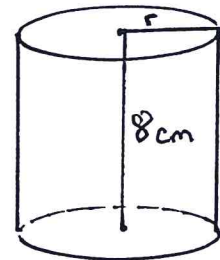
Volume = 800m^3

22. Find the value of h .



Volume = 311in^3

23. Find the value of r .



Volume = 1231.5cm^3