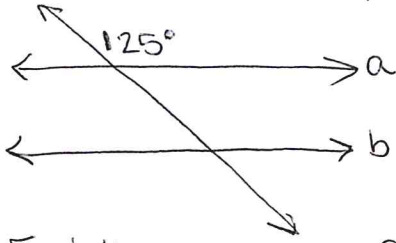


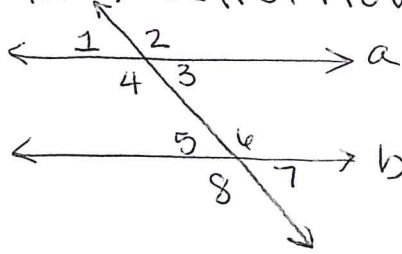
Ch 6/7 Review

1. Lines a & b are parallel

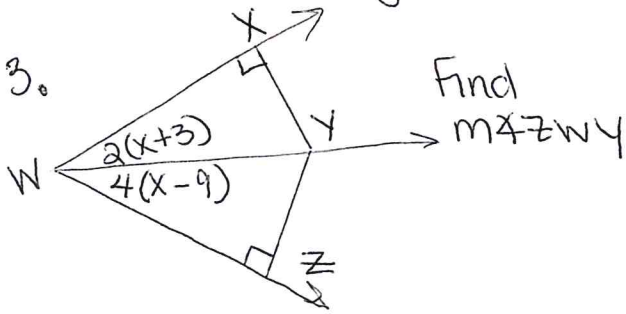


Find the measures of all the other angles shown.

2. Given $a \parallel b$. Prove $\angle 1 \cong \angle 7$



3.

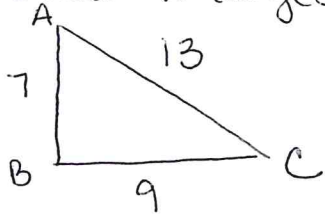


Find $m\angle ZWY$

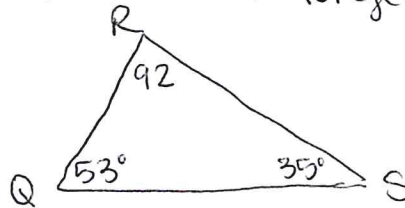
4. Using Points $(3,5)$ $(7,-2)$

- Find the distance
- Find the midpoint

5. List the \angle 's in order from smallest to largest



6. List the sides in order from shortest to longest.

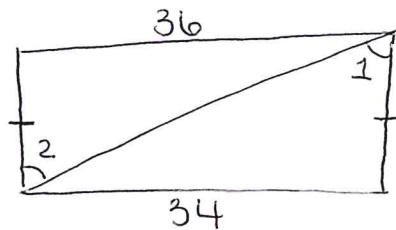


7. Can the following lengths be the sides of a Δ ?

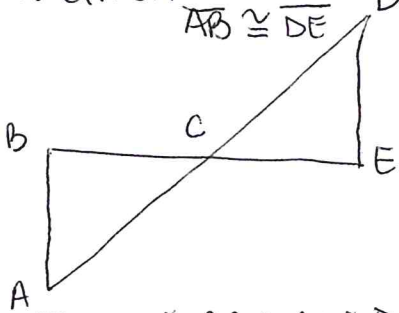
a) 5, 8, 11

b) 3, 4, 7

8. What do we know about $m\angle 1$ compared to $m\angle 2$?

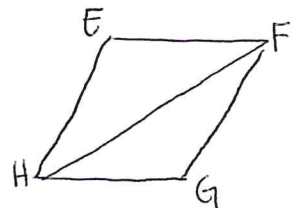


9. Given $\angle A \cong \angle D$
 $\overline{AB} \cong \overline{DE}$

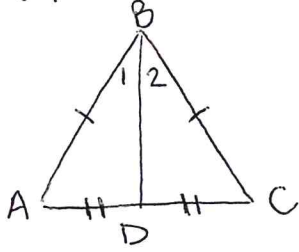


Prove $\triangle ABC \cong \triangle DEC$

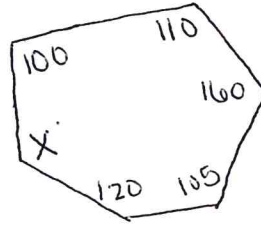
10. Given $\angle EFH \cong \angle GFH$
& $\angle EHF \cong \angle GFH$
Prove $\triangle EFH \cong \triangle GFH$



11. Prove $\angle 1 \cong \angle 2$

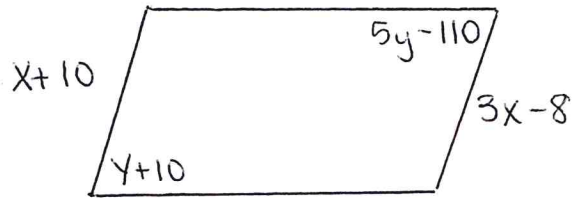


12. Find x

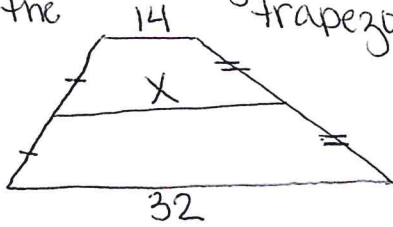


13. Find the measure of each interior & exterior angle in a regular 18-gon

14. Find the values of x & y that make the quadrilateral a parallelogram.



15. Find the length of the midsegment of the trapezoid.



16. Find the missing angles in the Kite.

