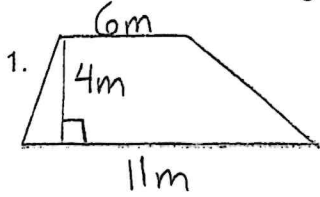
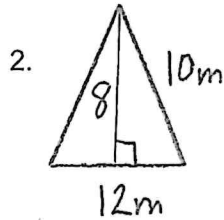


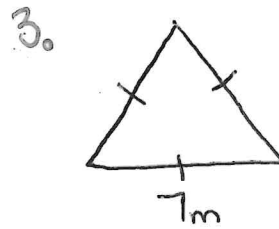
Find the area of each figure. Show all work/thinking.



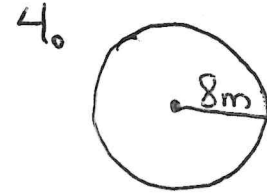
A =



A =

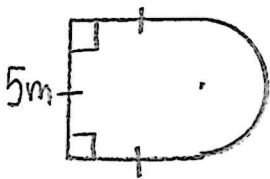


A =



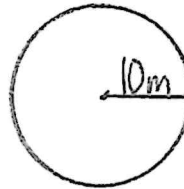
A =

5. Find the total area of the figure.



A =

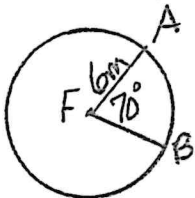
6. Find the circumference and area of the circle. Leave answers in terms of π



C =

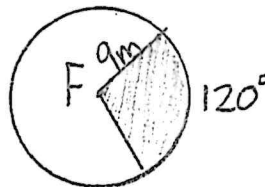
A =

7. Find the length of \widehat{AB} (give an estimate)



Length \approx

8. Find the area of the shaded sector (give exact answer)



A =

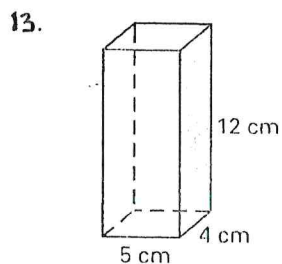
9. A triangle has a base of 16 and an area of 60 sq inches. Find its height.

10. A circle has an approximate area of 78.5 sq cm. Find an estimate for its radius.

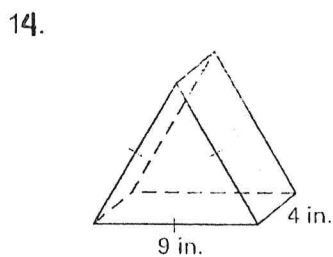
11. Convert 30° to radians

12. Convert $\frac{3\pi}{4}$ to degrees.

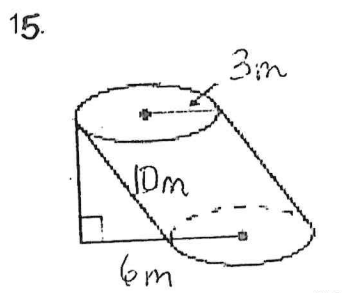
Find the volume of each solid. Show all work/thinking.



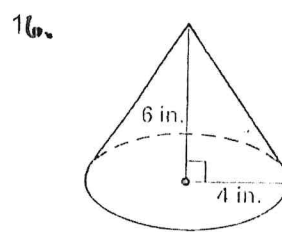
V =



V =



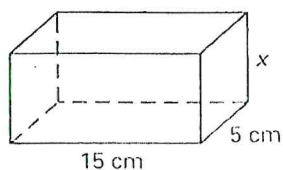
V =



V =

17. Find the value of x.

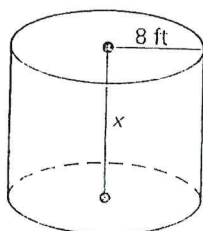
Volume = 525 cm^3



x =

18. Find the value of x

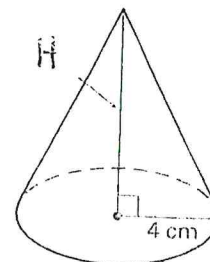
Volume = 2420 ft^3



x =

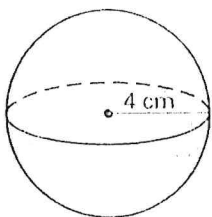
19. Find the height H

Volume = 64



H =

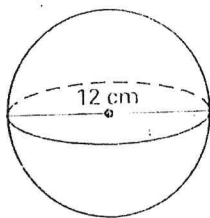
20. Find the surface area and the volume of the sphere.



SA =

V =

21. Find the surface area and the volume of the sphere.



SA =

V =

22. Two similar prisms have heights of 2m and 3m. What is the ratio of their volumes?