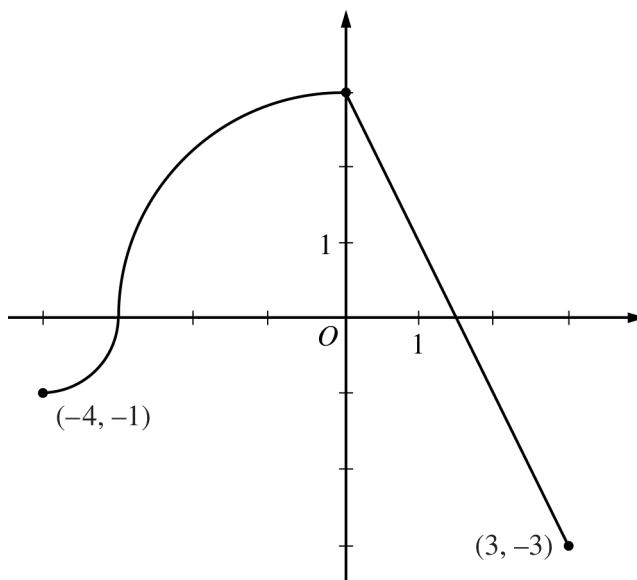


2011 AP[®] CALCULUS AB FREE-RESPONSE QUESTIONS



Graph of f

4. The continuous function f is defined on the interval $-4 \leq x \leq 3$. The graph of f consists of two quarter circles and one line segment, as shown in the figure above. Let $g(x) = 2x + \int_0^x f(t) dt$.
- Find $g(-3)$. Find $g'(x)$ and evaluate $g'(-3)$.
 - Determine the x -coordinate of the point at which g has an absolute maximum on the interval $-4 \leq x \leq 3$. Justify your answer.
 - Find all values of x on the interval $-4 < x < 3$ for which the graph of g has a point of inflection. Give a reason for your answer.
 - Find the average rate of change of f on the interval $-4 \leq x \leq 3$. There is no point c , $-4 < c < 3$, for which $f'(c)$ is equal to that average rate of change. Explain why this statement does not contradict the Mean Value Theorem.

WRITE ALL WORK IN THE EXAM BOOKLET.